
LONDON MARRIOTT HOTEL MARBLE ARCH

A perfectly located hotel for business and leisure travellers to explore Central London effortlessly with Marble Arch & Oxford Street at its doorstep.

- *247 Signature Bedrooms*
- *86 Twin Bedrooms*
- *5 Flexible Event Spaces – up to 150 delegates*
- *The Pickled Hen Restaurant - Healthy & Seasonal food.*
- *Gym facilities*
- *On-site car parking*
- *Local attractions – Marylebone, Oxford Street & Mayfair*
- *35 minutes from London Heathrow (Elizabeth Line)*
- *A Green Key Certified hotel*



NEW LOBBY



NEW LOBBY



NEW ROOMS

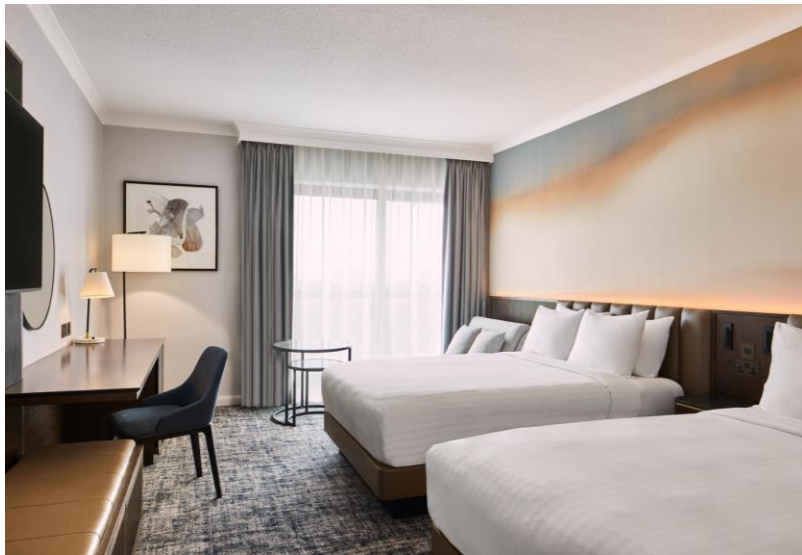
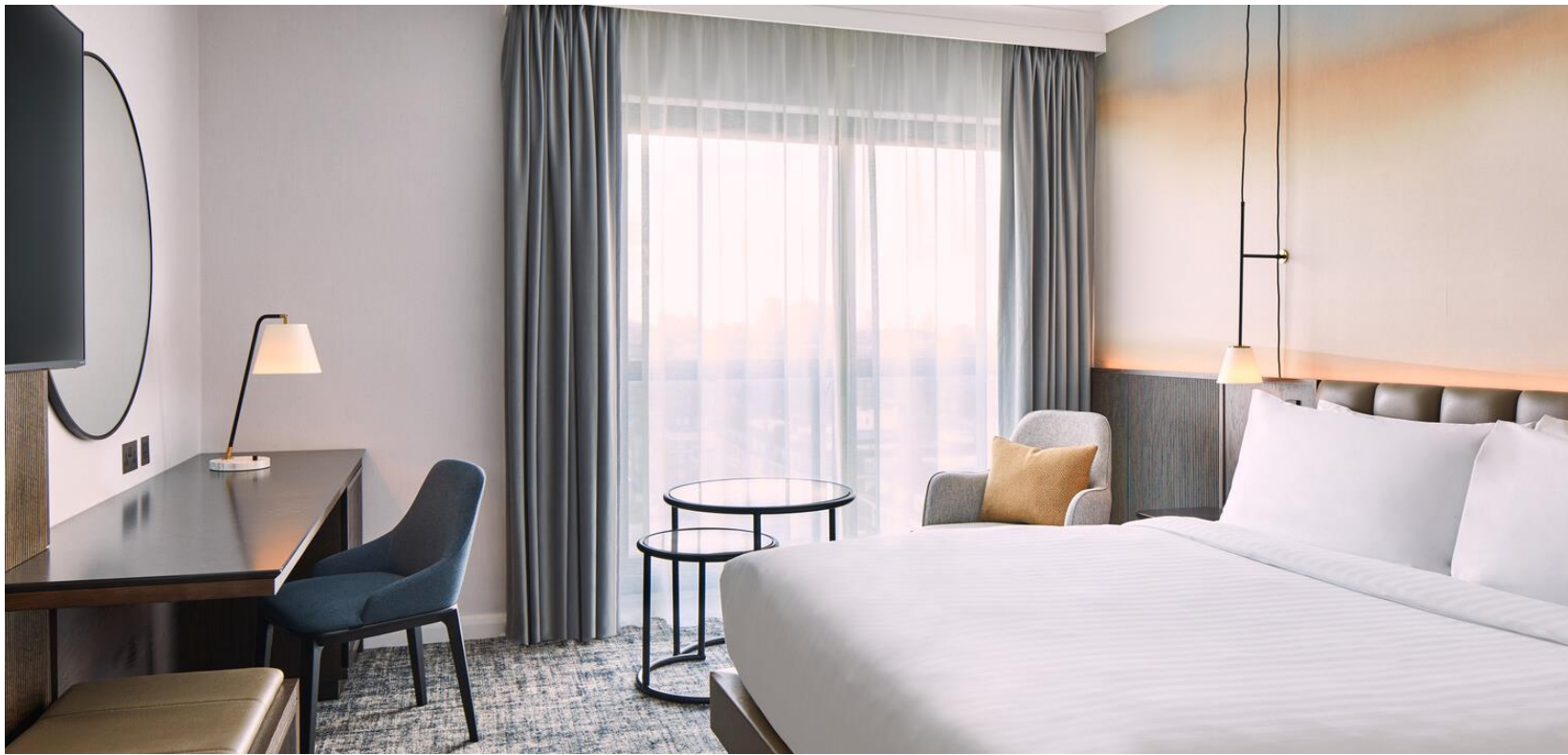


NEW ROOMS



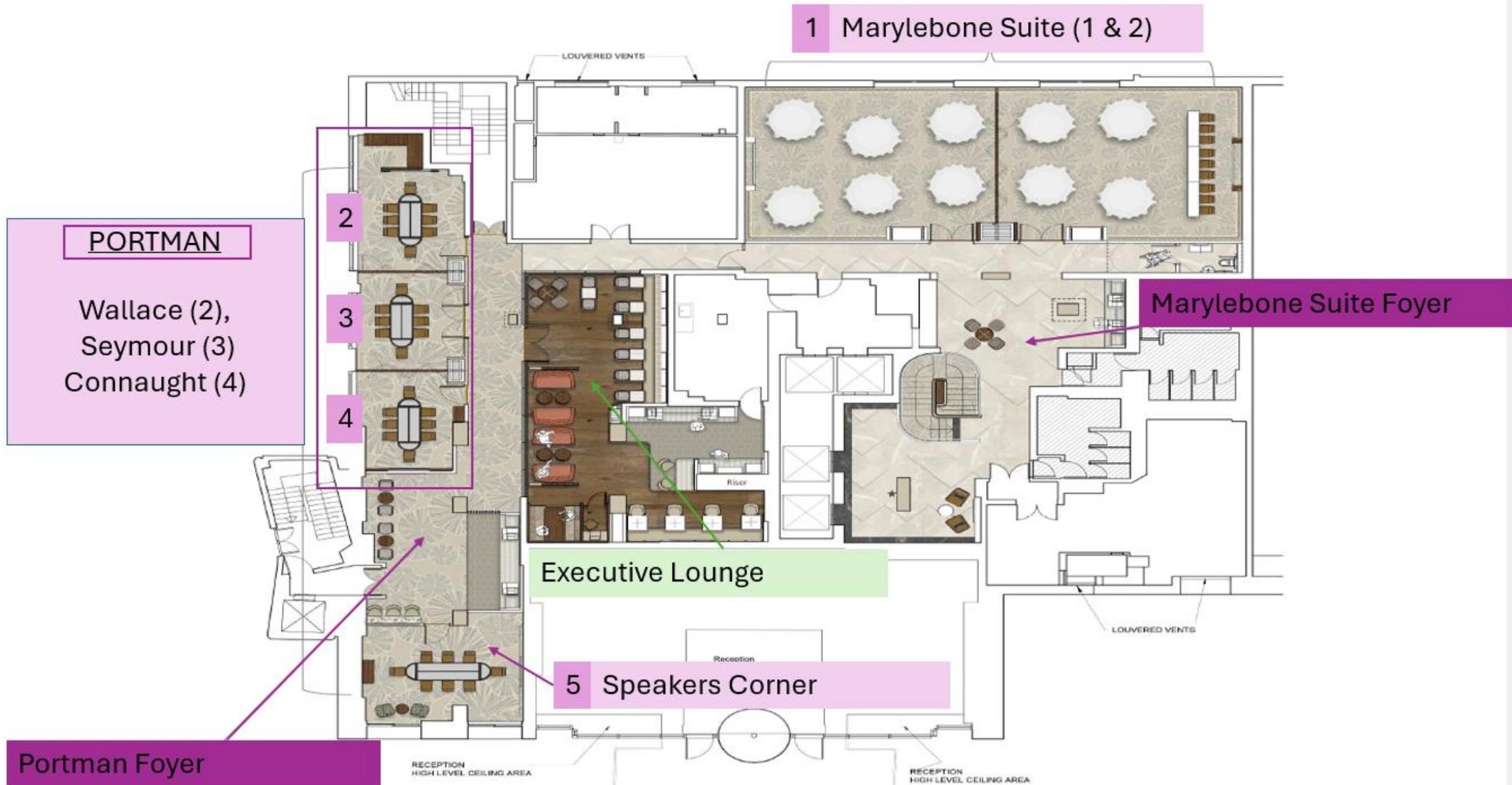
BRAND NEW CLUB LOUNGE














BRAND NEW MEETING & EVENT SPACES



CAPACITY CHART

| MEETING ROOMS |  THEATRE |  BOARDROOM/ CONFERENCE |  U-SHAPE |  CLASSROOM/ SCHOOLROOM |  CABARET/ CRES. ROUNDS |  RECEPTION/ STANDING BUFFET |  DINNER ROUNDS |
|--|--|--|--|---|---|--|--|
| MARYLEBONE SUITE | 150 | 50 | 46 | 80 | 90 | 150 | 140 |
| MARYLEBONE 1 | 50 | 25 | 24 | 35 | 36 | 50 | 50 |
| MARYLEBONE 2 | 50 | 25 | 24 | 35 | 36 | 50 | 50 |
| PORTMAN (WALLACE/SEYMOUR/CONNAUGHT) | 50 | 28 | 25 | 30 | 32 | 70 | 40 |
| WALLACE | 12 | 12 | 8 | 10 | 8 | NA | 12 |
| SEYMOUR | 10 | 8 | 6 | 10 | 6 | NA | 12 |
| CONNAUGHT | 10 | 8 | 6 | 10 | 6 | NA | 12 |
| WALLACE/SEYMOUR | 24 | 14 | 15 | 18 | 16 | NA | 30 |
| SEYMOUR/CONNAUGHT | 24 | 14 | 12 | 14 | 16 | NA | 30 |
| SPEAKERS CORNER | 20 | 14 | 14 | 10 | 12 | NA | 12 |